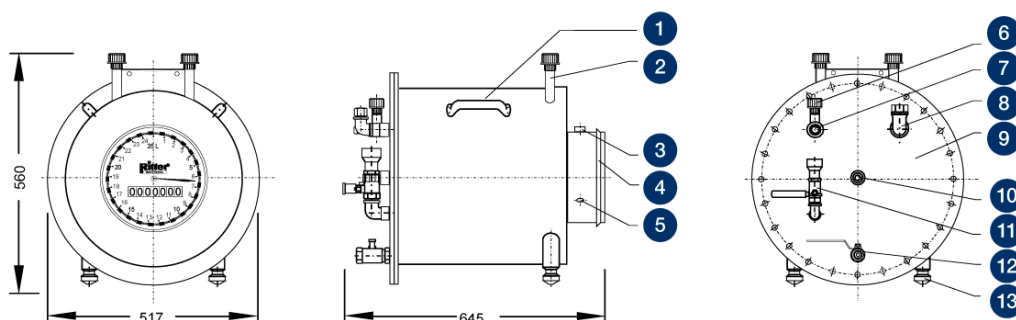


# DRUM-TYPE GAS METERS TG 25 STAINLESS STEEL • DATA-SHEET



Legend			+
1. Handle	2. Support unit for: Thermometer gas Thermometer packing liquid Manometer	3. Level 4. Removable cover 5. Pulse generator port (option)	
10. Gas outlet	11. Filling level indicator	6. Manometer connection 7. Gas inlet 8. Filling nozzle 9. Removable rear plate	
13. Levelling foot		12. Drainage faucet	

## Performance Data

Minimum flow $Q_{min}$	50 ltr/h	<b>Maximum gas inlet pressure <sup>(1)</sup></b>	<b>500 mbar</b>
Standard flow $Q_{standard}$	5,000 ltr/h	Minimum differential pressure <sup>(2)</sup>	0.1 mbar
Maximum flow $Q_{max}$	7,000 ltr/h	Minimum dial division	0.1 ltr
Measurement accuracy at standard flow	0.2 %	Maximum indication value <sup>(3)</sup>	999,999,990 ltr
Measurement accuracy across measuring range	0.5 %	Connection gas in/outlet	hose barb
Measuring drum volume	25 ltr/U	Inside-Ø hose barb	
Packing liquid quantity, approx	39 ltr	Outside-Ø hose barb	33 mm

<sup>(1)</sup> Standard version: 500 mbar – special version also available for 1 bar

<sup>(2)</sup> Differential pressure (= pressure loss) gas inlet gas outlet

<sup>(3)</sup> Standard Totalizing Roller Counter

## Models (materials)

Model	Casing	Measuring drum	Width	Height	Depth	Weight (without packing liquid)	Max. constant use temperature
1	Stainless Steel	PVC-grey	517 mm	560 mm	645 mm	38.0 kg	40 °C
2	Stainless Steel	PE-el	517 mm	560 mm	645 mm	37.6 kg	60 °C

Model	Casing	Measuring drum	Width	Height	Depth	Weight (without packing liquid)	Max. constant use temperature
3	Stainless Steel	PP-grey	517 mm	560 mm	645 mm	37.6 kg	80 °C
4	Stainless Steel	PVDF	517 mm	560 mm	645 mm	38.8 kg	80 °C

## Caution

Before and after measurements with **oxygen** purge the meter with an inert gas to avoid the danger of **explosion!**

For chemical resistance properties please contact your RITTER distribution partner!

## Standard Equipment

- > 8-digit Totalizing Roller Counter
- > Bubble level for levelling
- > Level and Levelling Feet
- > Magnetic Coupling (between the measuring drum and counting mechanism) , for an absolutely liquid-tight casing
- > Multi-Chamber Measuring Drum
- > Supports for Thermometer and Manometer
- > Viton sealing

## Built-in Options

- > Pulse Generator , standard or Ex-proof version (for connecting Electronic Display Unit/Computer
- > LCD Display , resettable, 8-digit (replaces Totalizing Roller Counter)
- > High Precision Packing Liquid Level Indicator »HPLI«, for packing liquid level

## Accessories

- > Data Acquisition Software »RIGAMO«, (for Windows)
- > Thermometer Gas (TG) , measuring range 0 °C to +60 °C
- > Thermometer Packing Liquid (TG) , measuring range 0 °C to +60 °C
- > Manometer for pressure  $p_{max} \leq 1$  bar , measuring range 0-600 mbar / 0-1 bar
- > Electronic Display Unit »EDU 32 FP«, displays volume and calculates flow rate via RS232 and analog-output in realtime (pulse generator required)

V 3.1 / Rev. 2019-01-11 / Subject to alterations.

The most recent version of this data-sheet can be found at <https://www.ritter.de/en/data-sheets/tg-25-stainless-steel/>

Dr.-Ing. RITTER Apparatebau GmbH & Co. KG · Coloniastrasse 19-23 · D-44892 Bochum · Germany

For questions please contact [mailbox@ritter.de](mailto:mailbox@ritter.de) or your any local distributor at <https://www.ritter.de/en/worldwide/>