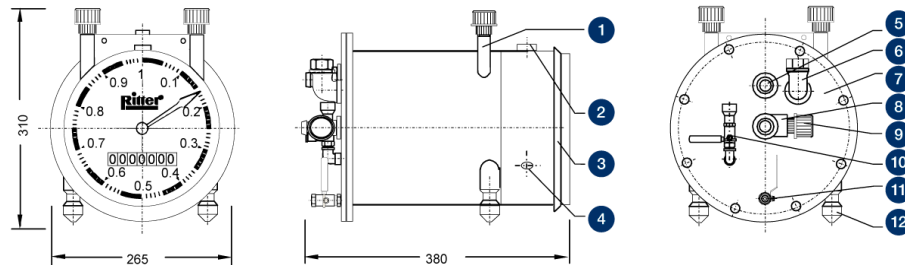


# TG 1 STAINLESS STEEL 1 BAR • DATA SHEET



### Legend

- |  |                                 |                           |
|--|---------------------------------|---------------------------|
| 1. Support unit for:<br>Thermometer<br>(gas) | 2. Level                        | 3. Removable cover        |
| Thermometer<br>(packing fl.)<br>Manometer    | 4. Puls generator port (option) | 5. Gas outlet             |
|  | 6. Filling nozzle               | 7. Rear plate, detachable |
|  | 8. Gas inlet                    | 9. Manometer connection   |
|  | 10. Liquid Level Indicator      | 11. Drainage faucet       |
|  |                                 | 12. Levelling foot        |

### Performance Data

Minimum flow $Q_{min}$	2	ltr/h
Standard flow $Q_{standard}$	100	ltr/h
Maximum flow $Q_{max}$	120	ltr/h
Measurement accuracy at standard flow	0.2	%
Measurement accuracy across measuring range	0.5	%
Measuring drum volume	1	ltr/U
Packing liquid quantity, approx	3	ltr

<b>Maximum gas inlet pressure</b>	<b>1</b>	<b>bar</b>
Minimum differential pressure <sup>(1)</sup>	0.2	mbar
Minimum dial division	0.01	ltr
Maximum indication value <sup>(2)</sup>	99,999,999	ltr
Connection gas in/outlet	hose barb	
Inside-Ø hose barb		
Outside-Ø hose barb	12	mm

<sup>(1)</sup> Differential pressure (= pressure loss) gas inlet gas outlet

<sup>(2)</sup> Standard Totalizing Roller Counter

### Models (materials)

Model	Casing	Measuring drum	Width	Height	Depth	Weight (without packing liquid)	Max. constant use temperature
1	Stainless Steel	PVC-grey	265 mm	310 mm	380 mm	8.5 kg	40 °C
2	Stainless Steel	PE-el	265 mm	310 mm	380 mm	8.3 kg	60 °C
3	Stainless Steel	PP-grey	265 mm	310 mm	380 mm	8.3 kg	50 °C
4	Stainless Steel	PVDF	265 mm	310 mm	380 mm	8.9 kg	50 °C

### Caution

**Before and after measurements with oxygen purge the meter with an inert gas to avoid the danger of explosion!** For chemical resistance properties please contact your RITTER distribution partner!

## Standard Equipment

---

- › 8-digit Totalizing Roller Counter
- › Bubble level for levelling
- › Level and Levelling Feet
- › Magnetic Coupling (between the measuring drum and counting mechanism) , for an absolutely liquid-tight casing
- › Multi-Chamber Measuring Drum
- › Supports for Thermometer and Manometer
- › Viton sealing

## Built-in Options

---

- › Pulse Generator , standard or Ex-proof version (for connecting Electronic Display Unit/Computer)

## Accessories

---

- › Data Acquisition Software »RIGAMO«, (for Windows)
- › Thermometer Gas (TG) , measuring range 0 °C to +60 °C
- › Thermometer Packing Liquid (TG) , measuring range 0 °C to +60 °C
- › Manometer for pressure  $p_{max} \leq 10$  bar , measuring range 0-6 / 0-10 bar; available for higher pressure ranges
- › Electronic Display Unit »EDU 32 FP«, displays volume and calculates flow rate via RS232 and analog-output in realtime (pulse generator required)

V 1.0 / Rev. 2020-02-26 / Subject to alterations.

The most recent version of this data-sheet can be found at <https://www.ritter.de/en/data-sheets/tg-1-stainless-steel-1-bar/> Dr.-Ing. RITTER  
Apparatebau GmbH & Co. KG · Coloniastrasse 19-23 · D-44892 Bochum · Germany

For questions please contact [mailbox@ritter.de](mailto:mailbox@ritter.de) or your local distribution partner (on our overview page)

Tags: [Drum-type gas meters](#)