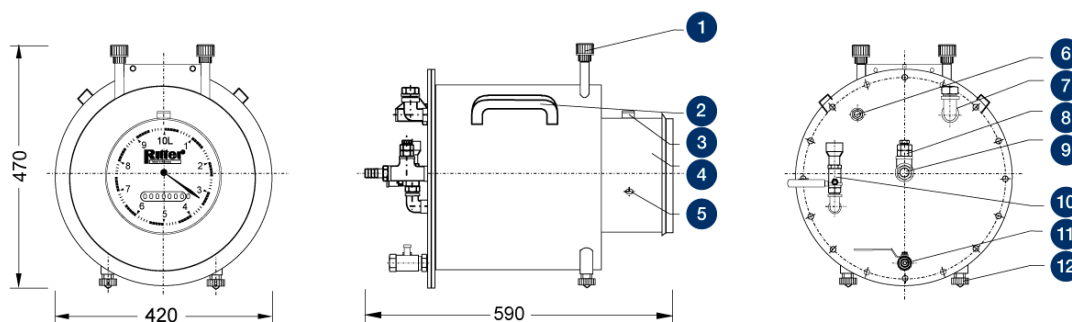


# DRUM-TYPE GAS METERS

## TG 10 STAINLESS STEEL 1 BAR • DATA-SHEET



### Legend

+

- |                                       |                             |                        |
|---------------------------------------|-----------------------------|------------------------|
| 1. Support for:<br>Thermometer<br>gas | 2. Handle                   | 3. Level               |
| Thermometer<br>packing<br>liquid      | 4. Removable cover          | 5. Puls generator port |
| Manometer                             | 6. Gas outlet               | 7. Filling nozzle      |
|                                       | 8. Manometer connection     | 9. Gas inlet           |
|                                       | 10. Filling level indicator | 11. Drainage faucet    |
|                                       | 12. Levelling foot          |                        |

### Performance Data

Minimum flow $Q_{\min}$	20 ltr/h	<b>Maximum gas inlet pressure</b>	<b>1 bar</b>
Standard flow $Q_{\text{standard}}$	1,000 ltr/h	Minimum differential pressure <sup>(2)</sup>	0.1 mbar
Maximum flow $Q_{\max}$	1,200 ltr/h	Minimum dial division	0.1 ltr
Measurement accuracy at standard flow	0.2 %	Maximum indication value <sup>(3)</sup>	99,999,999 ltr
Measurement accuracy across measuring range	0.5 %	Connection gas in/outlet	hose barb
Measuring drum volume	10 ltr/U	Inside-Ø hose barb	
Packing liquid quantity, approx	21 ltr	Outside-Ø hose barb	26 mm

<sup>(2)</sup> Differential pressure (= pressure loss) gas inlet gas outlet

<sup>(3)</sup> Standard Totalizing Roller Counter

### Models (materials)

Model	Casing	Measuring drum	Width	Height	Depth	Weight (without packing liquid)	Max. constant use temperature
1	Stainless Steel	PVC-grey	420 mm	470 mm	590 mm	25.6 kg	40 °C
2	Stainless Steel	PE-el	420 mm	470 mm	590 mm	25.2 kg	60 °C
3	Stainless Steel	PP-grey	420 mm	470 mm	590 mm	25.2 kg	80 °C

Model	Casing	Measuring drum	Width	Height	Depth	Weight (without packing liquid)	Max. constant use temperature
4	Stainless Steel	PVDF	420 mm	470 mm	590 mm	25.8 kg	80 °C

## Caution

Before and after measurements with **oxygen** purge the meter with an inert gas to avoid the danger of **explosion!**

For chemical resistance properties please contact your RITTER distribution partner!

## Standard Equipment

- > 8-digit Totalizing Roller Counter
- > Bubble level for levelling
- > Level and Levelling Feet
- > Magnetic Coupling (between the measuring drum and counting mechanism) , for an absolutely liquid-tight casing
- > Multi-Chamber Measuring Drum
- > Supports for Thermometer and Manometer
- > Viton sealing

## Built-in Options

- > Pulse Generator , standard or Ex-proof version (for connecting Electronic Display Unit/Computer
- > LCD Display , resettable, 8-digit (replaces Totalizing Roller Counter)
- > High Precision Packing Liquid Level Indicator »HPLI«, for packing liquid level

## Accessories

- > Data Acquisition Software »RIGAMO«, (for Windows)
- > Thermometer Gas (TG) , measuring range 0 °C to +60 °C
- > Thermometer Packing Liquid (TG) , measuring range 0 °C to +60 °C
- > Manometer for pressure  $p_{max} \leq 1$  bar , measuring range 0-600 mbar / 0-1 bar
- > Electronic Display Unit »EDU 32 FP«, displays volume and calculates flow rate via RS232 and analog-output in realtime (pulse generator required)

V 3.3 / Rev. 2019-01-11 / Subject to alterations.

The most recent version of this data-sheet can be found at <https://www.ritter.de/en/data-sheets/tg-10-stainless-steel/>

Dr.-Ing. RITTER Apparatebau GmbH & Co. KG · Coloniastrasse 19-23 · D-44892 Bochum · Germany

For questions please contact [mailbox@ritter.de](mailto:mailbox@ritter.de) or your any local distributor at <https://www.ritter.de/en/worldwide/>