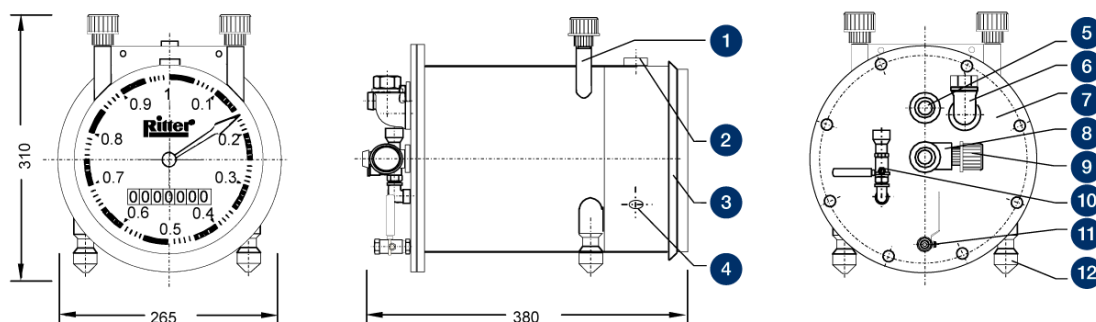


# DRUM-TYPE GAS METERS TG 1 STAINLESS STEEL • DATA-SHEET



Legend +

- |   |  |  |
|---|--|--|
| 1. Support unit for:<br>thermometer<br>(gas)<br>thermometer<br>(packing fl.)<br>manometer | 2. Level<br>4. Puls generator port (option)  | 3. Removable cover<br>5. Gas outlet<br>7. Removable rear plate<br>9. Manometer connection<br>11. Drainage faucet |
|   | 6. Filling nozzle<br>8. Gas inlet<br>10. Filling level indicator<br>12. Levelling foot |  |

## Performance Data

Minimum flow $Q_{min}$	2 ltr/h	<b>Maximum gas inlet pressure <sup>(1)</sup></b>	<b>500 mbar</b>
Standard flow $Q_{standard}$	100 ltr/h	Minimum differential pressure <sup>(2)</sup>	0.2 mbar
Maximum flow $Q_{max}$	120 ltr/h	Minimum dial division	0.01 ltr
Measurement accuracy at standard flow	0.2 %	Maximum indication value <sup>(3)</sup>	99,999,999 ltr
Measurement accuracy across measuring range	0.5 %	Connection gas in/outlet	hose barb
Measuring drum volume	1 ltr/U	Inside-Ø hose barb	
Packing liquid quantity, approx	3.5 ltr	Outside-Ø hose barb	14 mm

<sup>(1)</sup> Standard version: 500 mbar – special version also available for 1 bar

<sup>(2)</sup> Differential pressure (= pressure loss) gas inlet gas outlet

<sup>(3)</sup> Standard Totalizing Roller Counter

## Models (materials)

Model	Casing	Measuring drum	Width	Height	Depth	Weight (without packing liquid)	Max. constant use temperature
1	Stainless Steel	PVC-grey	265 mm	310 mm	380 mm	8.5 kg	40 °C
2	Stainless Steel	PE-el	265 mm	310 mm	380 mm	8.3 kg	60 °C
3	Stainless Steel	PP-grey	265 mm	310 mm	380 mm	8.3 kg	80 °C

Model	Casing	Measuring drum	Width	Height	Depth	Weight (without packing liquid)	Max. constant use temperature
4	Stainless Steel	PVDF	265 mm	310 mm	380 mm	8.9 kg	80 °C

## Caution

Before and after measurements with **oxygen** purge the meter with an inert gas to avoid the danger of **explosion!**

For chemical resistance properties please contact your RITTER distribution partner!

## Standard Equipment

- > 8-digit Totalizing Roller Counter
- > Bubble level for levelling
- > Level and Levelling Feet
- > Magnetic Coupling (between the measuring drum and counting mechanism) , for an absolutely liquid-tight casing
- > Multi-Chamber Measuring Drum
- > Supports for Thermometer and Manometer
- > Viton sealing

## Built-in Options

- > Pulse Generator , standard or Ex-proof version (for connecting Electronic Display Unit/Computer)
- > LCD Display , resettable, 8-digit (replaces Totalizing Roller Counter)
- > High Precision Packing Liquid Level Indicator »HPLI«, for packing liquid level

## Accessories

- > Data Acquisition Software »RIGAMO«, (for Windows)
- > Thermometer Gas (TG) , measuring range 0 °C to +60 °C
- > Thermometer Packing Liquid (TG) , measuring range 0 °C to +60 °C
- > Manometer for pressure  $p_{max} \leq 1$  bar , measuring range 0-600 mbar / 0-1 bar
- > Electronic Display Unit »EDU 32 FP«, displays volume and calculates flow rate via RS232 and analog-output in realtime (pulse generator required)

V 3.2 / Rev. 2019-01-11 / Subject to alterations.

The most recent version of this data-sheet can be found at <https://www.ritter.de/en/data-sheets/tg-1-stainless-steel/>

Dr.-Ing. RITTER Apparatebau GmbH & Co. KG · Coloniastrasse 19-23 · D-44892 Bochum · Germany

For questions please contact [mailbox@ritter.de](mailto:mailbox@ritter.de) or your any local distributor at <https://www.ritter.de/en/worldwide/>